



URBAN DESIGN
ARCHITECTS

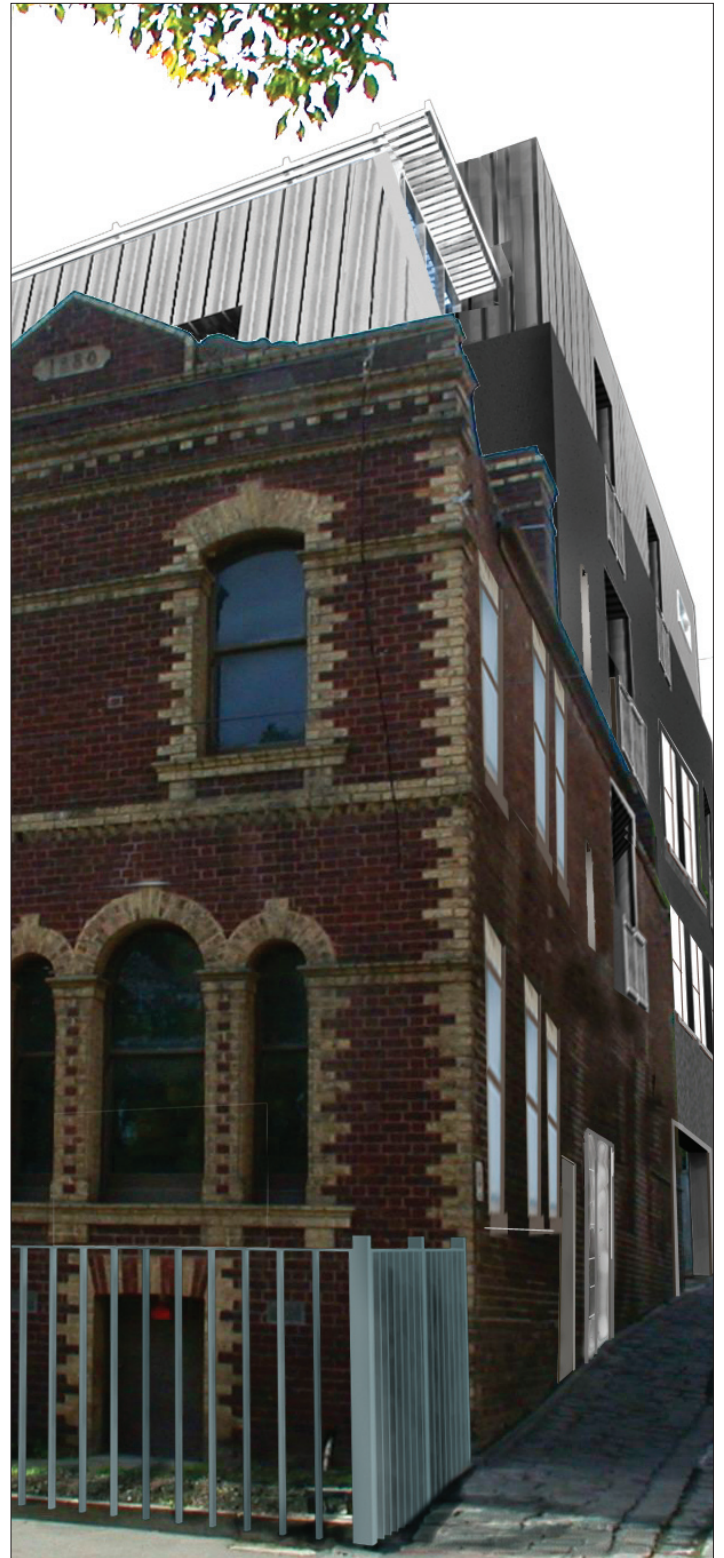
jolimont street

location jolimont street, east melbourne

value \$1.5 million

status completed

This worthy Victorian terrace adjacent to Yarra Park was converted to 4 dwellings with parking in this city fringe location. Consultation with local resident groups, council and heritage advisors resulted in an innovative design which adds to the character and amenity of the precinct.



Urban Design Architects Pty Ltd
1 Cubitt Street Cremorne Victoria 3121
t. +61 3 9429 5055
f. +61 3 9429 2255
e. architects@urbandesign.com.au
www.urbandesign.com.au